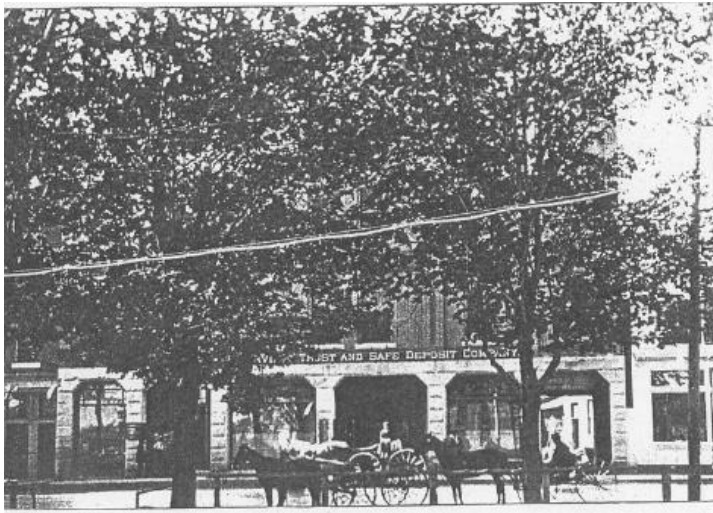


THE MASONIC BLOCK

14 Common Street ~ Map #18



Architect E.E. Lewis of Gardiner, Maine designed The Masonic Block in 1890, and the Masons moved in on March 23, 1891. Its Romanesque Revival Architecture is evidenced by the arched windows on the fourth floor, use of terra cotta panels with a rosette in the center, and granite piers, which surround the first story storefronts. This construction project culminated a series of major commercial blocks built in Waterville in 1890-1891.

Originally, Waterville Trust and Safe Deposit Company and C.G. Carleton, Esq., auctioneer, occupied the ground floor. There were offices on the 2nd floor and the Masons occupied the 3rd and 4th floors. The last bay on the right used to be an open passageway, which carriages could pass through to deliver passengers to the building. This area was enclosed in 1984 to accommodate the building with an elevator to provide handicapped access. This building houses The Proper Pig, a pub-style restaurant opening in June 2016 while upper floors are primarily used for office space.

