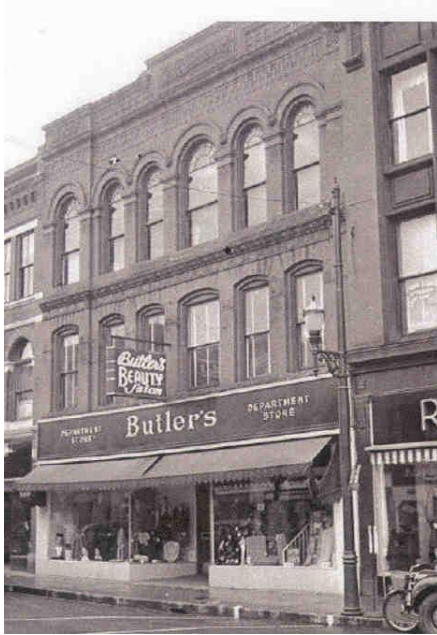


THE SOPER BLOCK

54-56 Main Street ~ Map #25



Fassett & Thompson designed The Soper Block at 54-56 Main Street in 1890 using richly ornamented terra cotta and quarry-faced stone trim. It was the first building in Waterville to install an elevator in 1901.

The building was home to the L.H. Soper Company, which specialized in dry and fancy goods. They advertised that they had a mail order system, elevator service, and were Waterville's great retail center.

In the 1980's the ground floor was part of Butler's Department Store.

Today the first floor is Saturn Business Systems/Carbon Copy – a printing shop and office supply company. The upper floors are home to a number of small businesses, including Blue Wave Studio which offers classes in yoga and ballroom dancing.

